



Dombirobod

Residence

Kelajagingiz uchun
mustahkam poydevor


Dombirobod
Residence

Bu go'zallik va nafislik, mustahkamlik va yuqori darajadagi xizmat bilan birlashadigan eksklyuziv makon



Qulay va farovon maskan

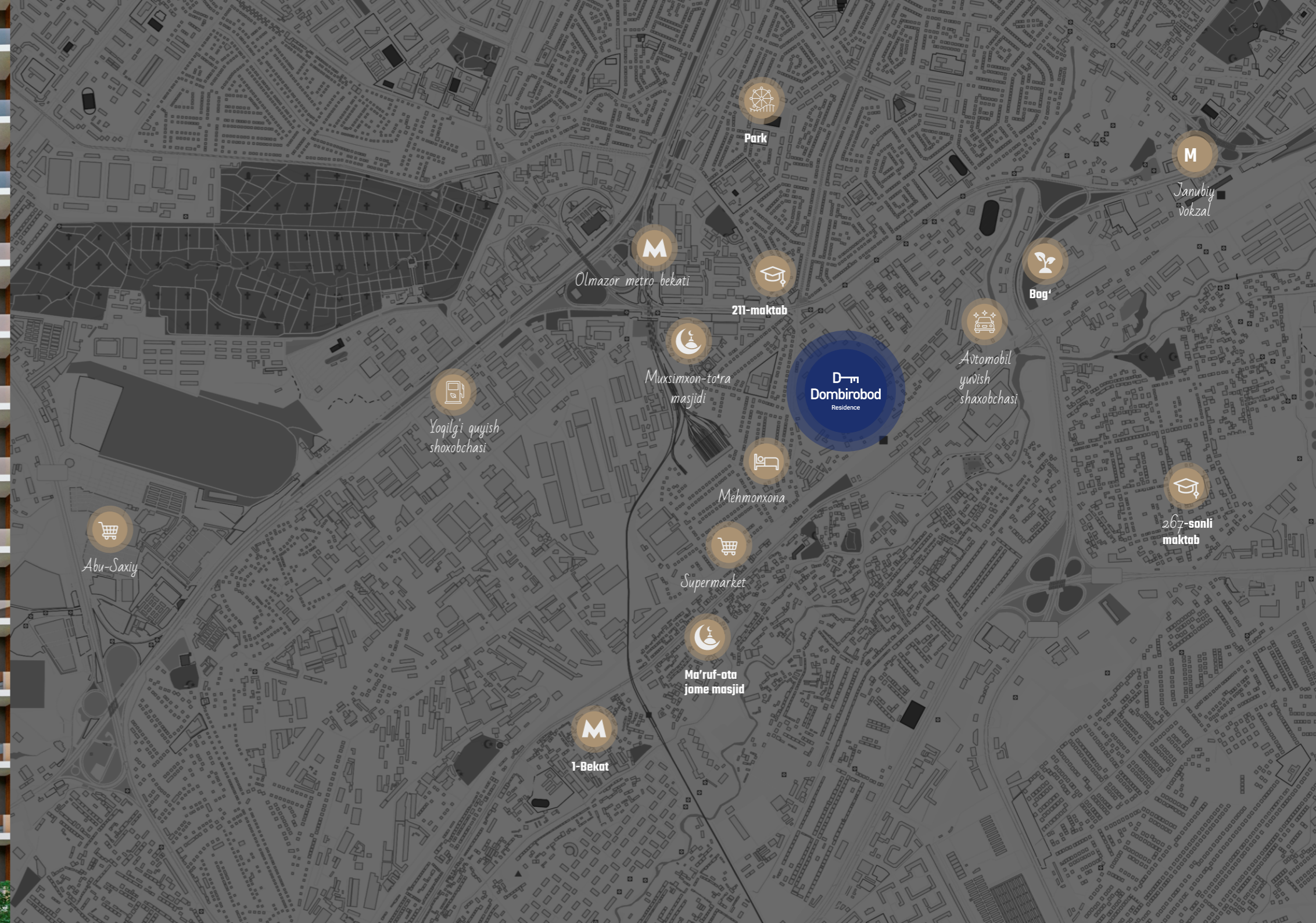
Do'mbirobod Residence turar joy majmuasi poytaxtning eng tez rivojlanayotgan tumanlaridan birida joylashgan. Qulay joylashuv shaharning asosiy transport yo'nalishlariga oson kirishni ta'minlaydi, bu esa markaz va boshqa muhim obyektlarga yo'lni tez va qulay bo'lishiga yordam beradi.

Yaqin atrofda maktablar, tibbiyot muassasalari va savdo markazlari joylashgan.

Poytaxtning Chilonzor tumanida qad roslashi rejalashtirilgan komfort-klass loyihasi yangi qurilgan zamonaviy va puxta o'ylangan makonning bir qismiga aylanadi. Turar-joy majmuamiz shaharning qoq markazida, go'zal bog'lar va tarixiy binolarga ega ko'chalar bilan o'ralgan holda joylashgan.

Tuman infratuzilmasi

Ta'lim muassasalari: maktablar, bolalar bog'chalari, universitetlar. Tibbiy muassasalar: shifoxonalar, poliklinikalar, dorixonalar. Savdo markazlari: do'konlar, supermarketlar, bozorlar. Xordiq chiqarish obyektlari: bog'lar, restoranlar.





Qulay va farovon maskan

Do'mbirobod Residence o'zining shinam hovlisiga ega bo'lib, u yerda siz tabiat qo'ynida dam olishingiz, oilangiz va do'stlaringiz bilan vaqt o'tkazishingiz yoki tabiat sadolari ostida ertalabki kofe ichishingiz mumkin. Bu dam olish va muloqot qilish uchun ajoyib joy.

Majmua hududiga kirishda mehmonlarni tinchlik va hashamat muhitini yaratadigan, doimo yashil tUSDagi daraxtlar bilan bezatilgan ulug'vor xiyobon kutib oladi.

Do'mbirobod residencening asosiy afzalliklaridan biri uning o'ziga xos ko'kalamzorlashtirilganligidir.

Aholi uchun qulay va shinam muhit yaratish maqsadida, majmua hududidagi har bir detal ehtiyotkorlik bilan ishlab chiqilgan. Pardozlangan yashil maydonlar, landshaft kompozitsiyalari va zamonaviy bezak elementlari majmua hududiga o'zgacha fayz va joziba baxsh etadi.

Dizayn va arxitektura

Do'mbirobod Residence zamonaviy uslub va nafosat timsoli bo'lib, zamonaviy me'morchilik ruhini to'liq aks ettiradi. Ushbu turar-joy majmuasi eng yuqori sifat va qulaylik standartlari hisobga olingan holda ishlab chiqilgan bo'lib, nafaqat aholiga qulaylikni balki jozibali ko'rinishni ham taqdim etadi.

Turar-joy majmuamizning bezatilganidan faxrlanamiz. Yashil maydonlar, pardozlangan maysazorlar va keng hovlilar hashamat va farovonlik muhitini yaratib, aholimizga tabiat go'zalligidan o'z ostonasida bahramand bo'lish imkonini beradi.



Loyiha qulayliklari

Majmuada bolalar farovonligi uchun alohida e'tibor qaratilgan. Ya'ni, hovlida keng va xavfsiz bolalar maydonchasi bo'lib, u yer turli xil o'yin elementlari bilan jihozlangan. Bu yerda bolajonlar o'z jismoniy ko'nikmalarini va fantaziyalarini rivojlantirib, quvnoq va xavfsiz vaqt o'tkazishlari mumkin.



O'simliklarga boy
landshaft dizayn



Aravachalar uchun
maxsus yo'lak



Videokuzatuv va
xavfsizlik 24/7



Barbekyu maydoni



Bolalar uchun
o'yin maydonchalari



Mashq qilish zonasi



Biz Raqamlarda

Binalar soni:

5 ta

Qavatlar soni:

16

Xonadonlarning maydoni:

29-80 M²

Majmuaning maydoni:

3 ga.

Afzalliklar

Do'mbirobod Residence o'z aholisiga ko'plab afzalliklarni taklif qiladi:



Zamonaviy qurilish texnologiyalari:

Ilg'or materiallar va texnologiyalardan foydalanish, yuqori sifat va barqarorlikni ta'minlaydi



Rivojlangan infratuzilma:

Yashash uchun barcha zarur qulayliklar bir qadamlik masofada



Ekologik tozalik:

Dam olish va sayr qilish uchun yashil zonalar va bog'lar, qulaylik va komfort muhitini yaratadi



Puxta o'ylangan xonadon rejalari:

Ilg'or materiallar va texnologiyalardan foydalanish, yuqori sifat va barqarorlikni ta'minlaydi



Xavfsizlik:

Himoyalangan hudud va 24/7 kuzatuv kameralari aholi tinchligi va xavfsizligini ta'minlaydi



Bolalar maydoni:

Bolalar uchun maxsus hudud, ularning faol va xavfsiz vaqt o'tkazishini ta'minlaydi



Xonalar rejasi

Rejalashtirish yechimlarining keng tanlovi sizga doimoorzu qilgan uyni topishga imkon beradi.

Planirovkalarning turli-tumanligi:

Xonadonlar mijozlarimizning har qanday did va talabi uchun turli variantlardagi xonadonlar rejasi mavjud. Turli o'lchamdagi va planirovkalardagi xonadonlarning keng tanlovi, qayta planirovkalash imkoniyati.

Puxta o'ylangan yechimlar:

Qulay va funksional planirovkalar, balkonlar mavjudligi, panoramali derazalar. Qulay planirovkalar yashash qulayligi xabar beradi.

Potolog/shift balandligi:

Keng uy obrazini yaratuvchi Qulay/shinam shift balandlik, shinamlik tuyg'usini ifoda etadi.



58.1 M²

2 xonali

1-qavat

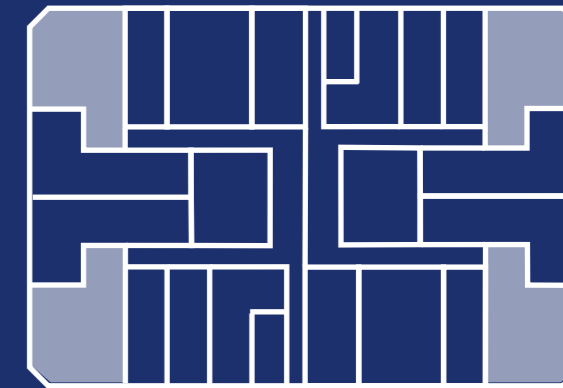
Dahliz-11.1 M²

Oshxona - 16 M²

Yotoqxonona - 7.2 M²

Mehmonxonona - 18.4 M²

Sanuzel - 5.4 M²



25.9 M²

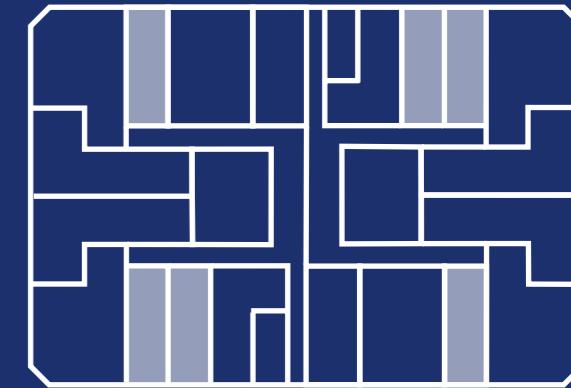
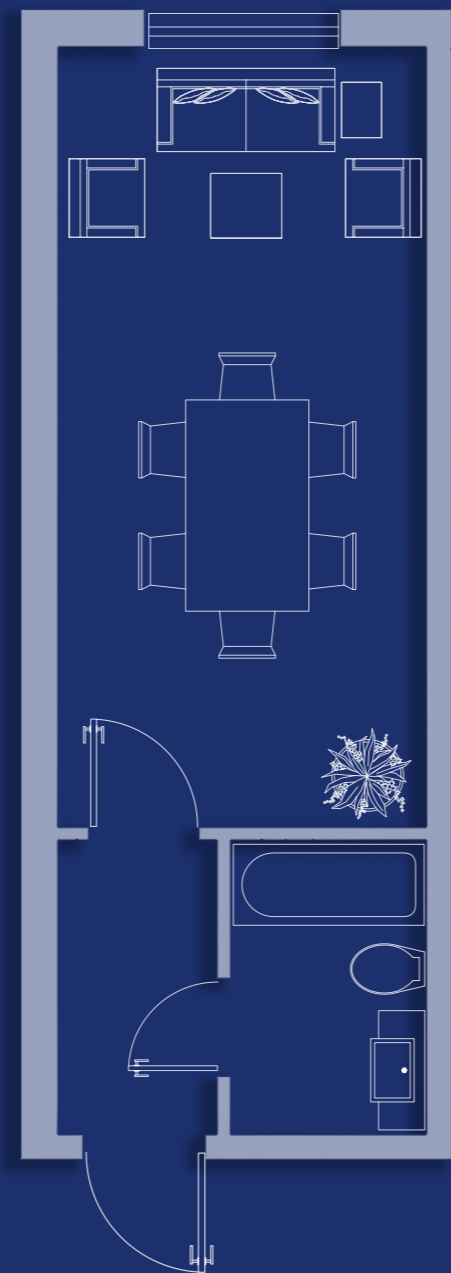
1 xonali

1-qavat

Dahliz - 3.1 M²

Oshxona va mehmonxona - 19 M²

Sanuzel - 3.8 M²



33.7 m²

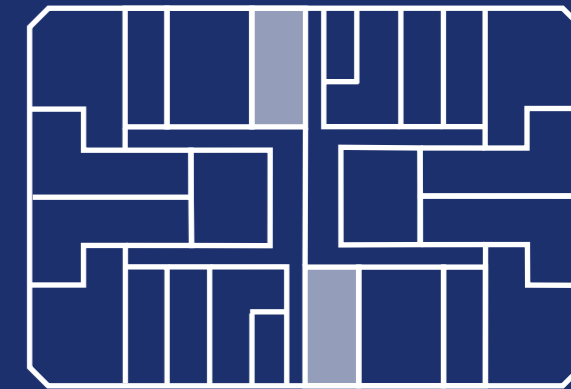
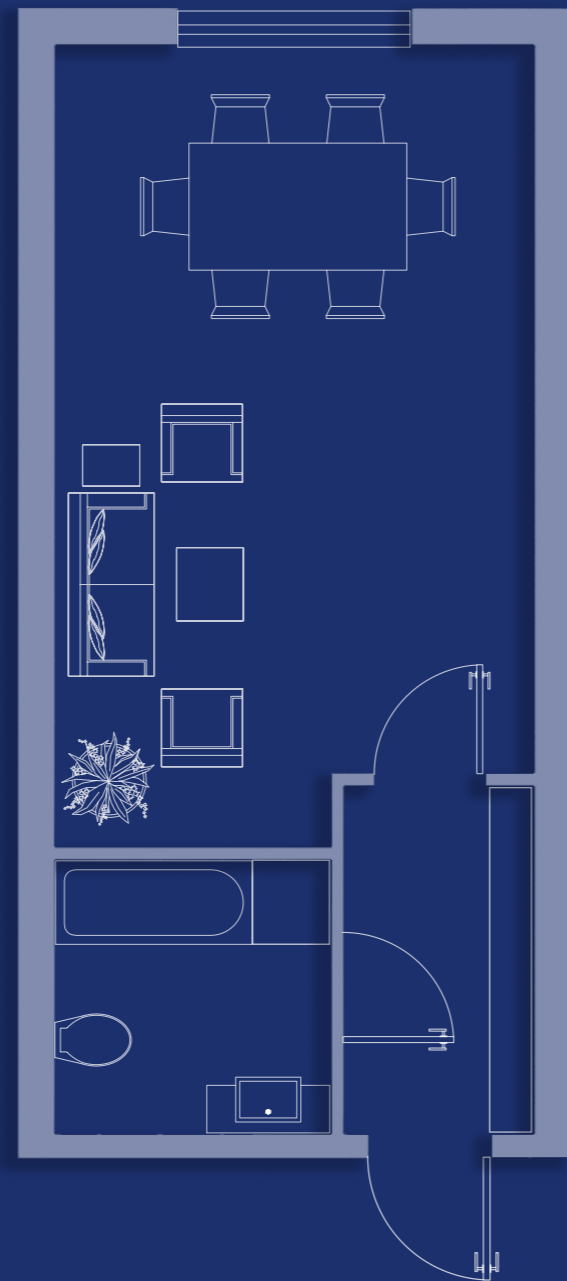
1 xonali

1-qavat

Dahliz - 4.3 m²

Oshxona va mehmonxona - 24.4 m²

Sanuzel - 5 m²



52.6 M²

2 xonali

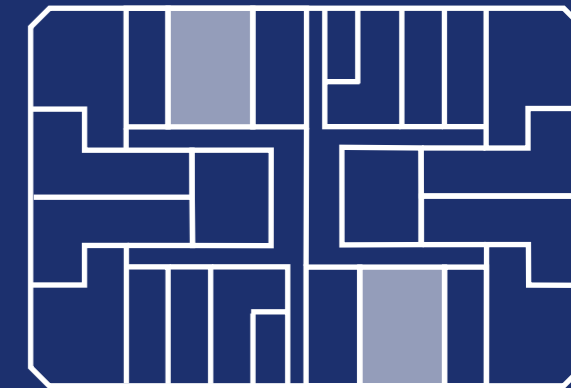
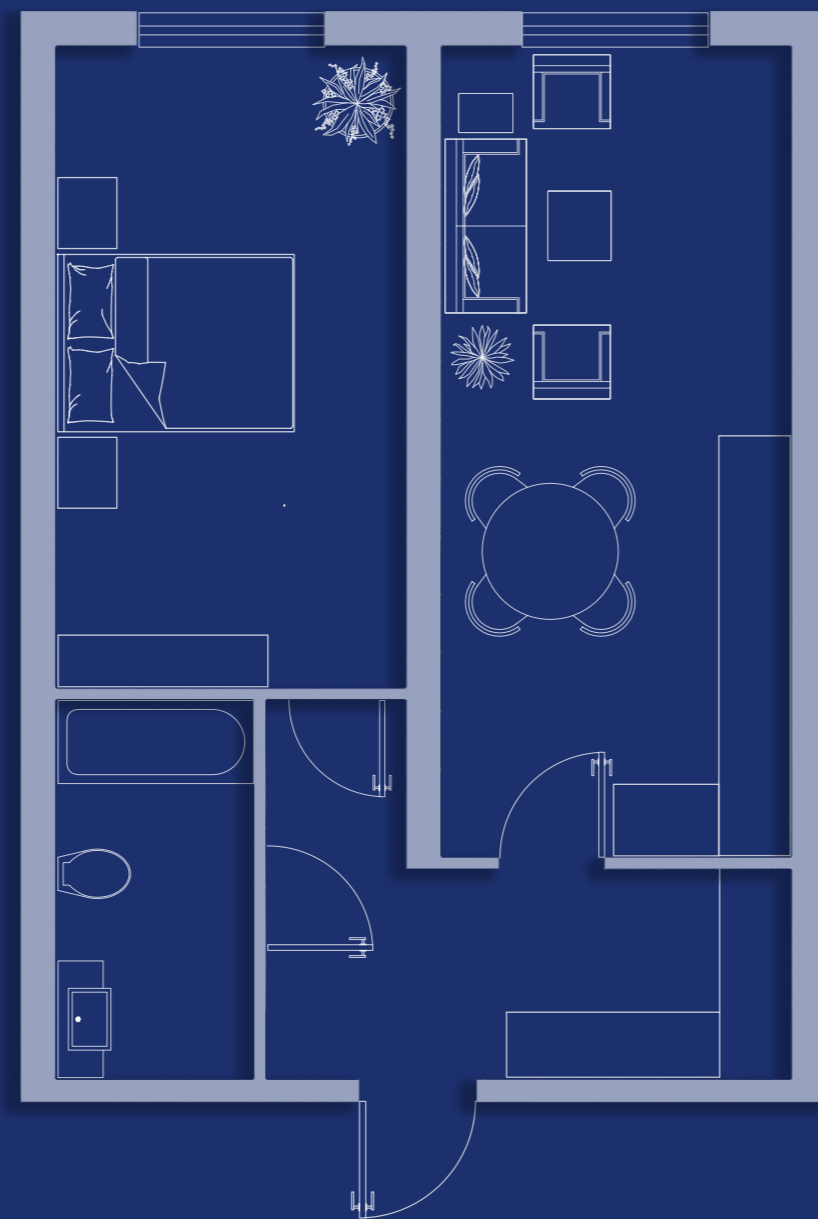
1-qavat

Dahliz - 9.8 M²

Oshxona va mehmonxona - 20.8 M²

Sanuzel - 5.5 M²

Yotoqxona - 16.5 M²



52.9 M²

2 xonali

1-qavat

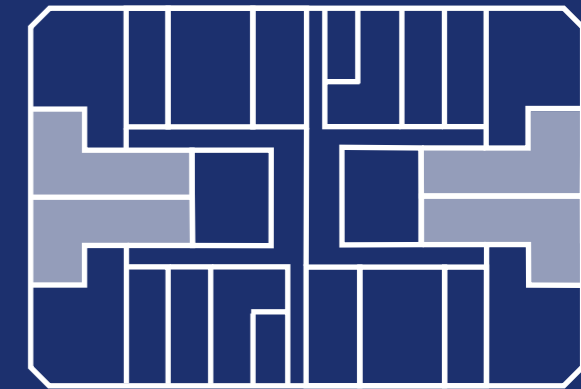
Dahliz - 3.7 M²

Yotoqxona - 11.7 M²

Yotoqxona - 9.4 M²

Oshxona va mehmonxona - 23.8 M²

Sanuzel - 4.3 M²



34.2 m²

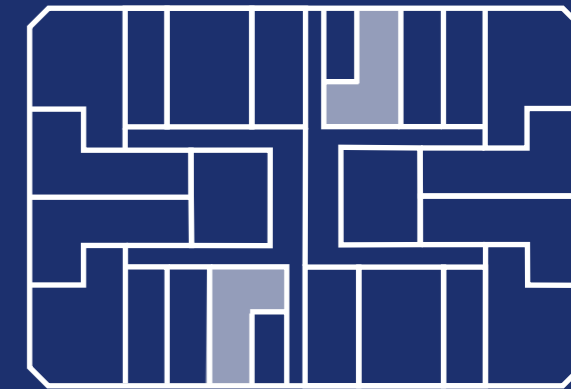
1 xonali

1-qavat

Dahliz - 5.4 m²

Oshxona va mehmonxona - 20.8 m²

Sanuzel - 8 m²



79.5 m²

2 xonali

2-5 qavat

Dahliz - 11.1 m²

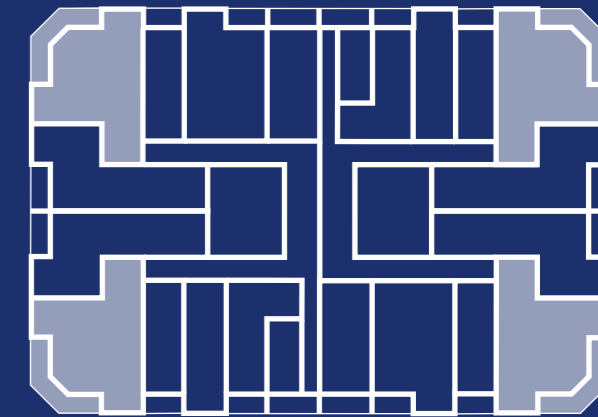
Oshxona - 16 m²

Yotoqxona - 11.4 m²

Mehmonxona - 22.9 m²

Sanuzel - 5.4 m²

Balkon - 12.7 m²



29.8 M²

2 xonali

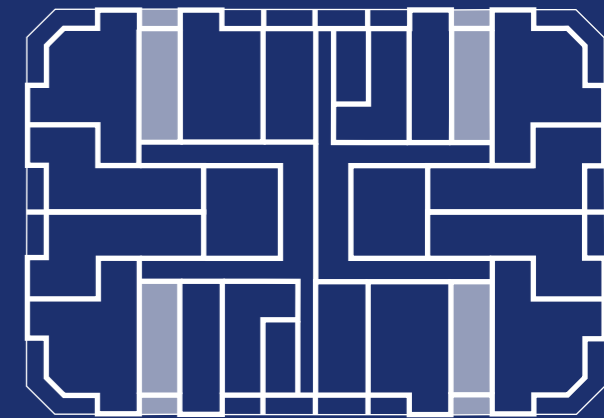
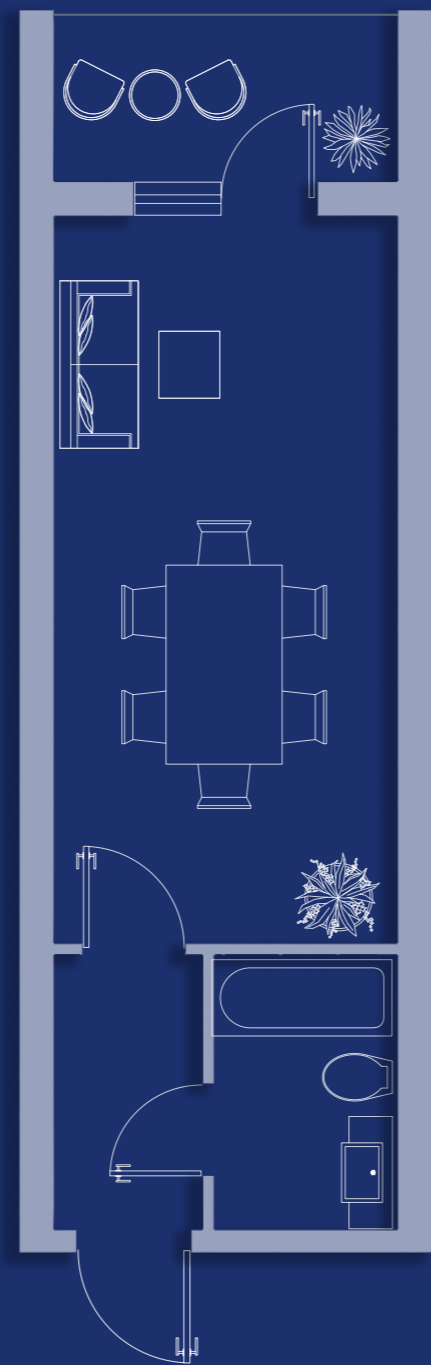
2-5 qavat

Dahliz - 3.1 M²

Sanuzel - 3.8 M²

Oshxona va mehmonxona - 19 M²

Balkon - 3.9 M²



37.5 m²

1 xonali

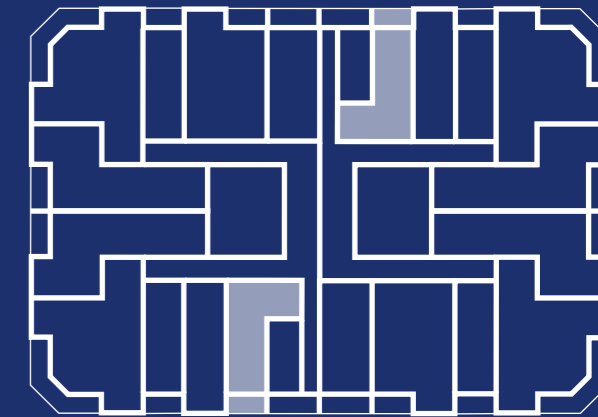
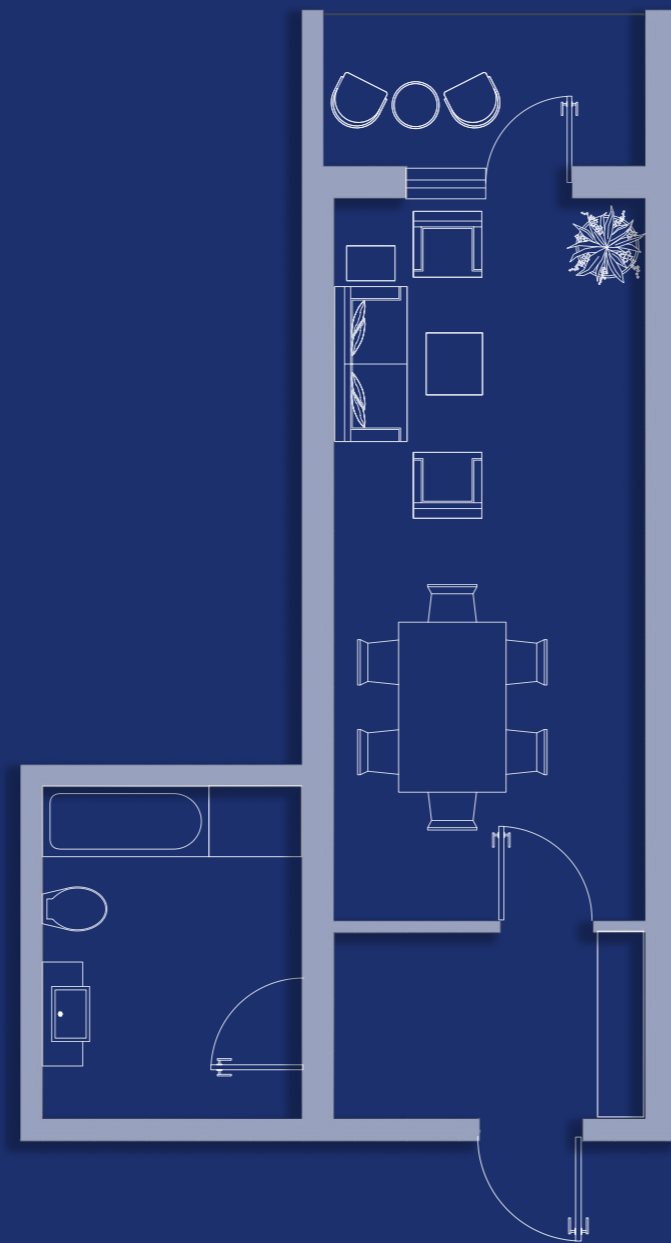
2-5 qavat

Dahliz - 5.4 m²

Sanuzel - 7.1 m²

Oshxona va mehmonxona - 20.8 m²

Balkon - 4.2 m²



39.1 M²

1 xonali

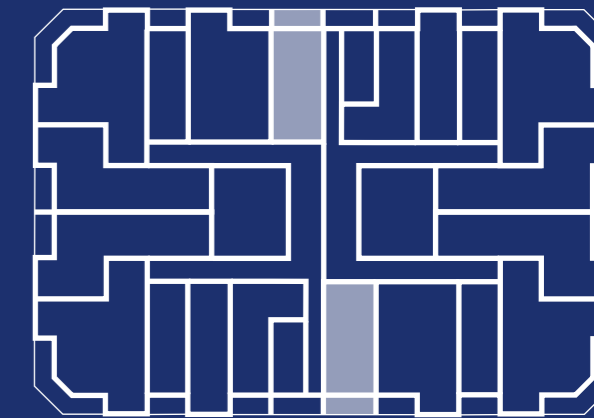
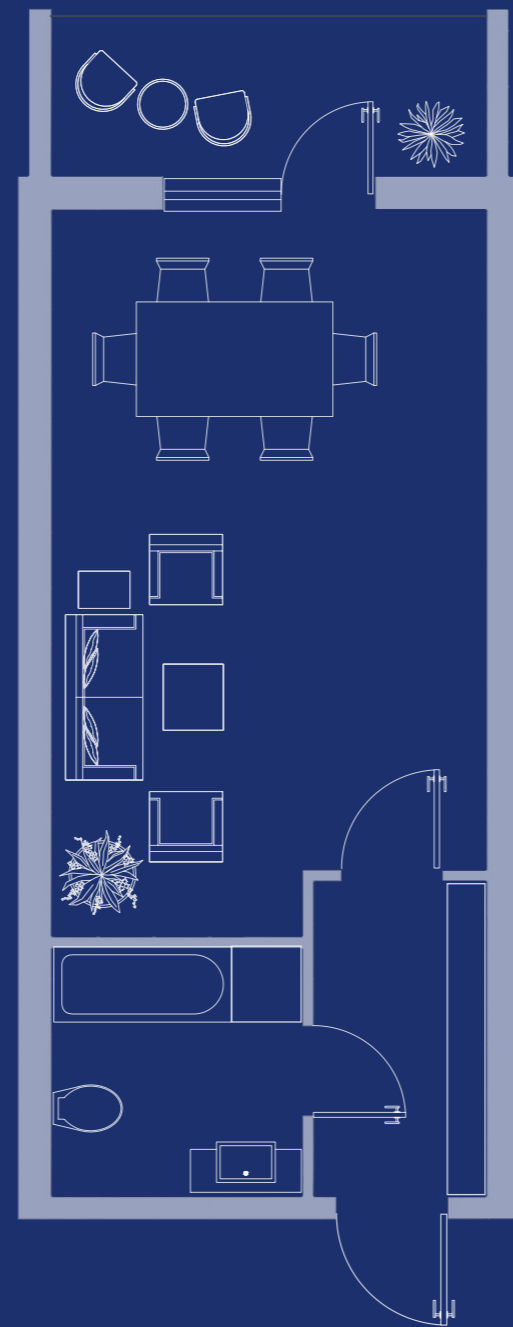
2-5 qavat

Dahliz - 4.3 M²

Sanuzel - 5 M²

Oshxona va mehmonxona - 24.4 M²

Balkon - 5.4 M²



61.3 M²

2 xonali

2-5 qavat

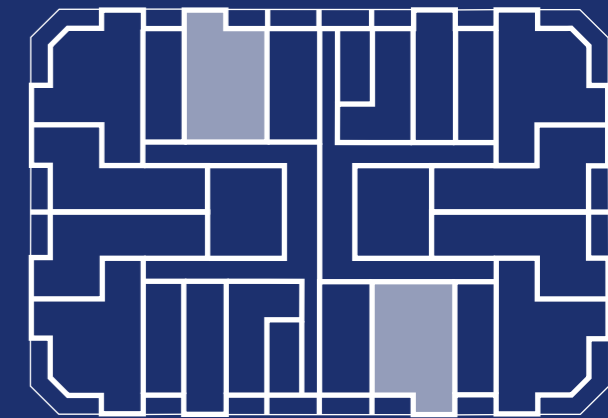
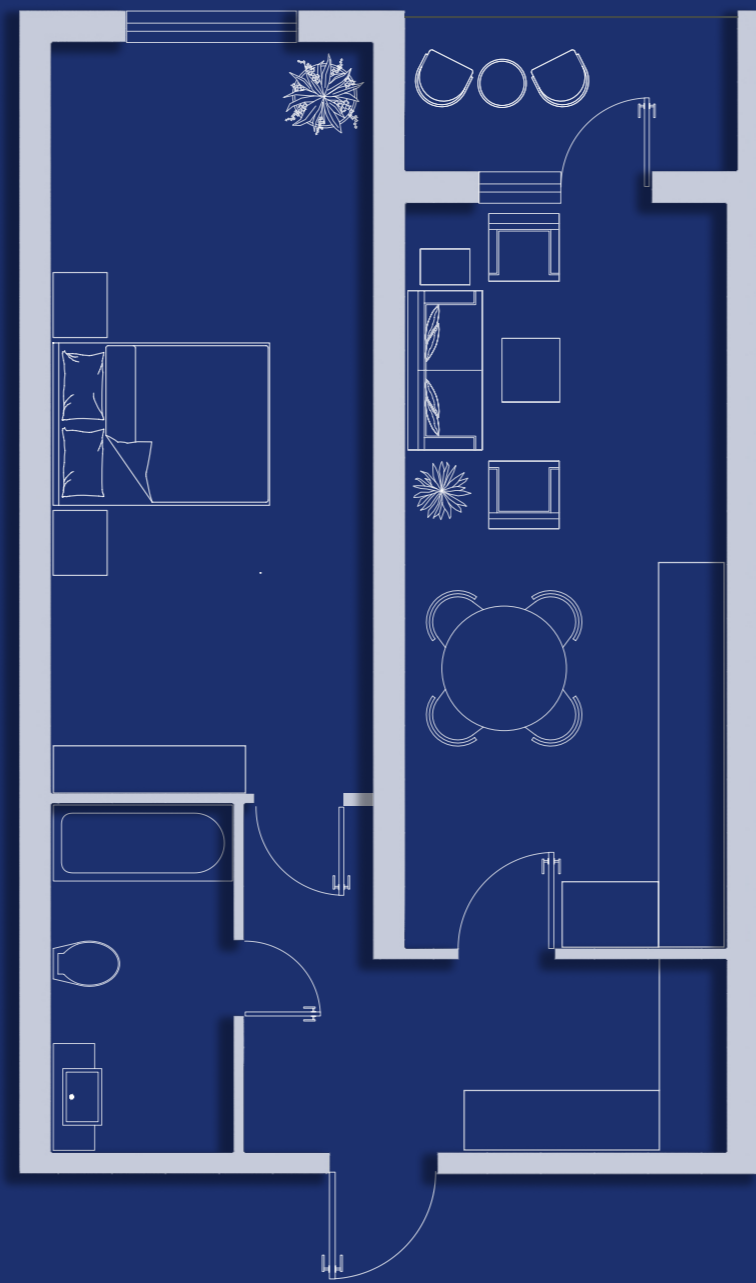
Dahliz - 9.8 M²

Sanuzel - 5.5 M²

Oshxona va mehmonxona - 20.8 M²

Yotoqxonona - 21 M²

Balkon - 4.2 M²



61.8 M²

2 xonali

2-5 qavat

Dahliz - 3.7 M²

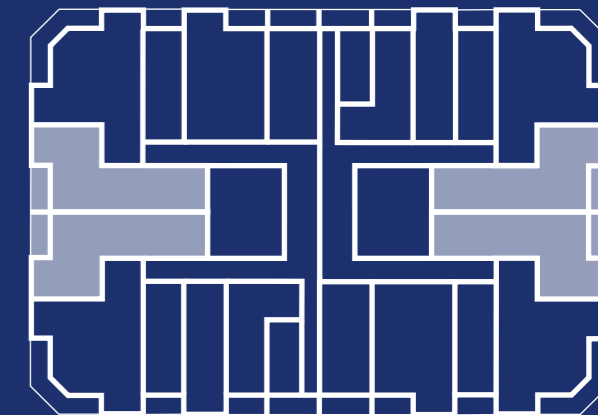
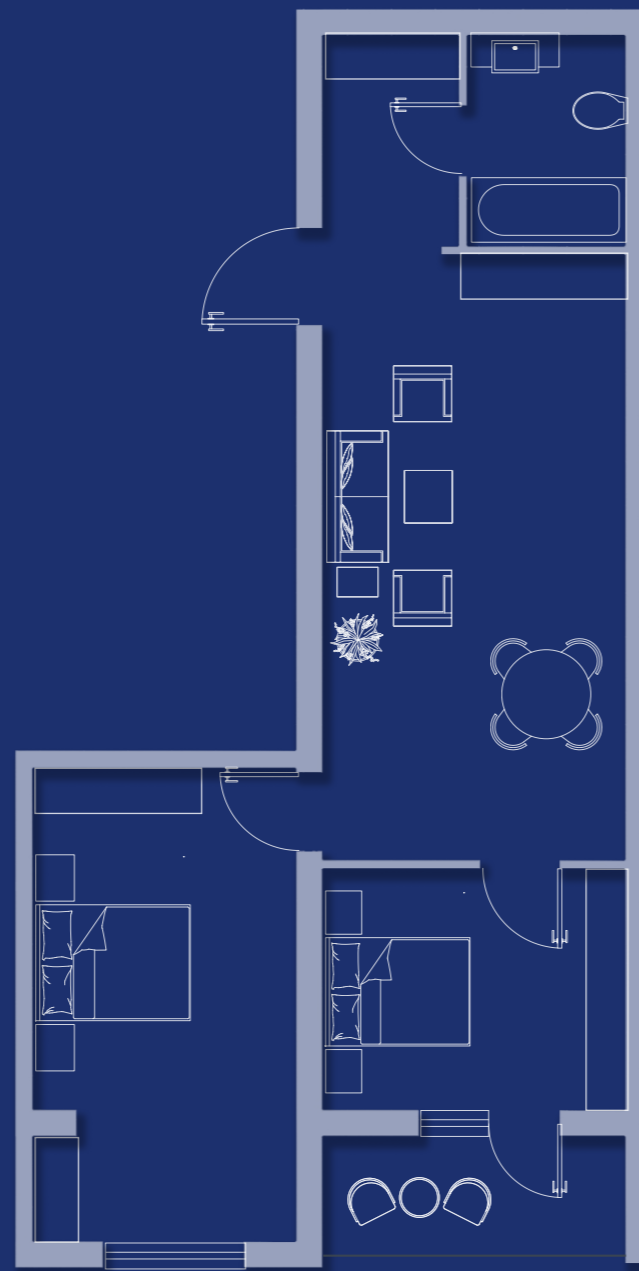
Yotoqxona - 16 M²

Yotoqxona - 9.4 M²

Sanuzel - 4.3 M²

Oshxona va mehmonxona - 23.8 M²

Balkon - 4.6 M²



30.4 M²

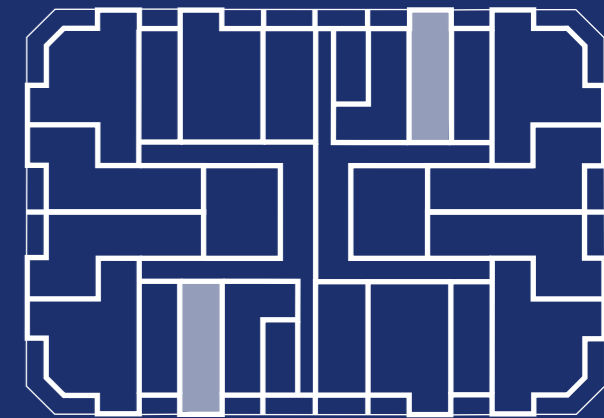
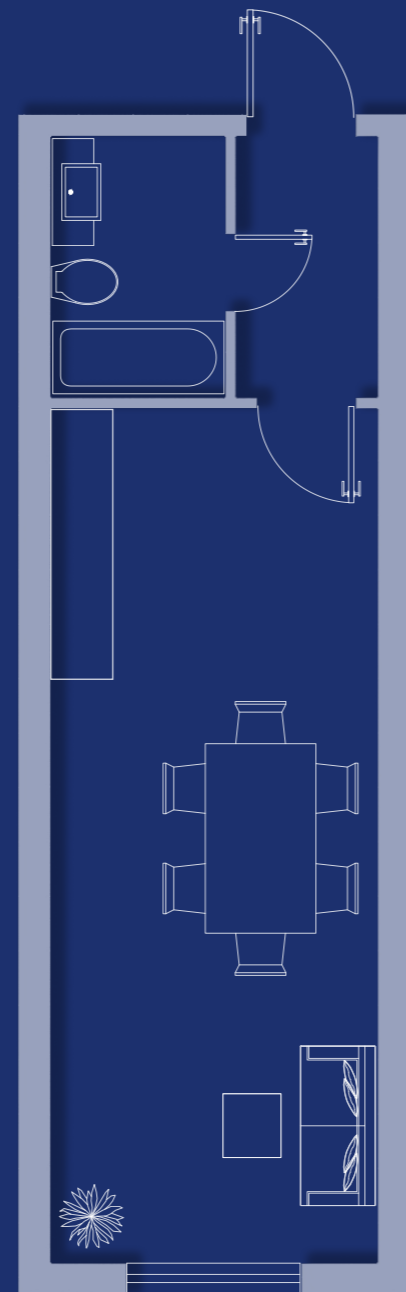
1 xonali

2-5 qavat

Dahliz - 3.1 M²

Sanuzel - 3.8 M²

Oshxona va mehmonxona - 23.5 M²



80.8 M²

2 xonali

6-16 qavat

Dahliz - 11.1 M²

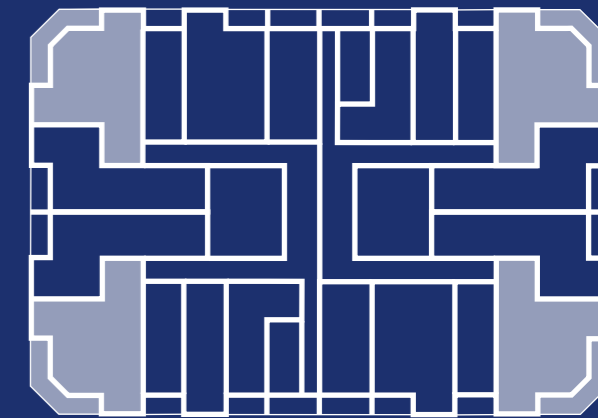
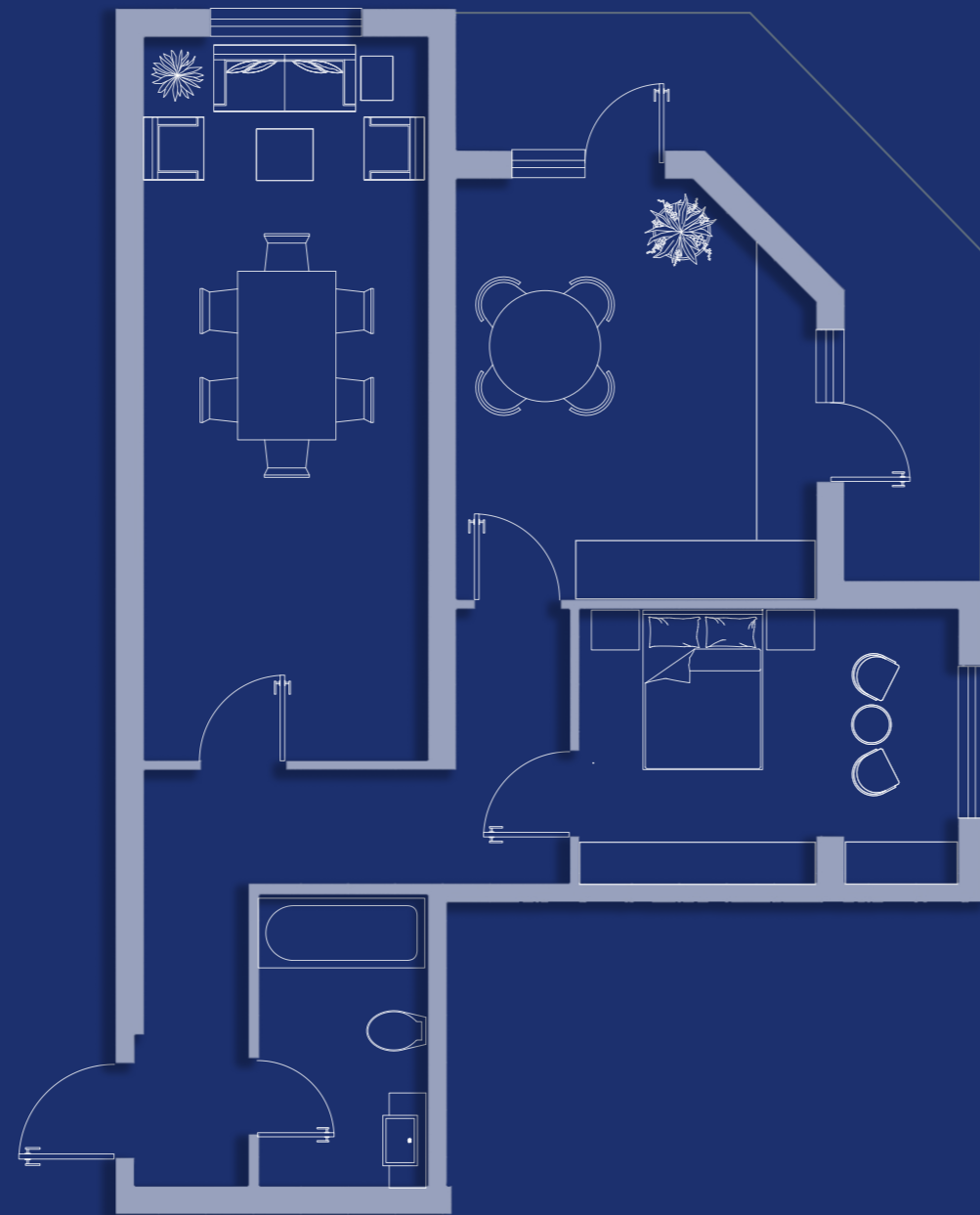
Oshxona - 17.2 M²

Yotoqxona - 11.5 M²

Mehmonxona - 22.9 M²

Sanuzel - 5.4 M²

Balkon - 12.7 M²



32.1 M²

1 xonali

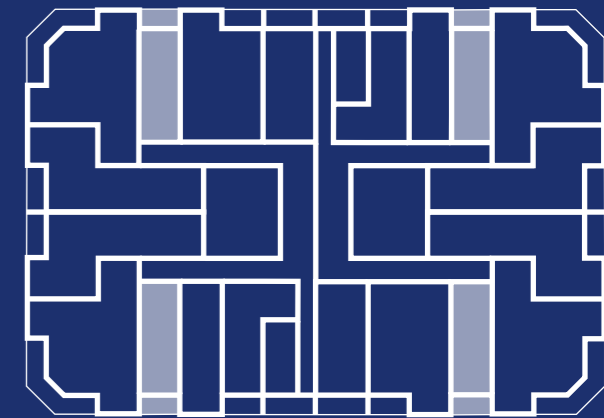
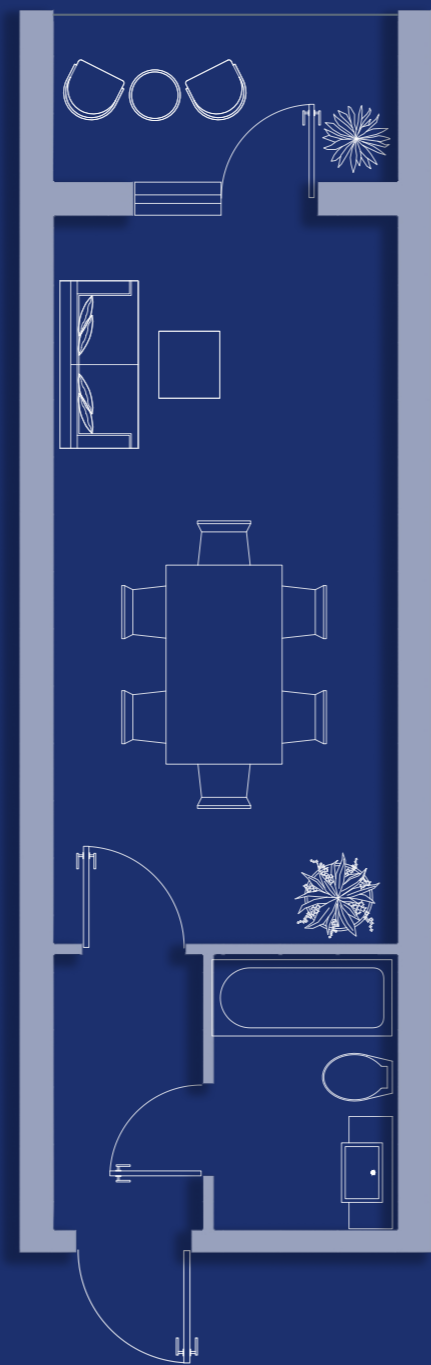
6-16 qavat

Dahliz - 3.3 M²

Sanuzel - 4 M²

Oshxona va mehmonxona - 20.6 M²

Balkon - 4.2 M²



39.6 m²

1 xonali

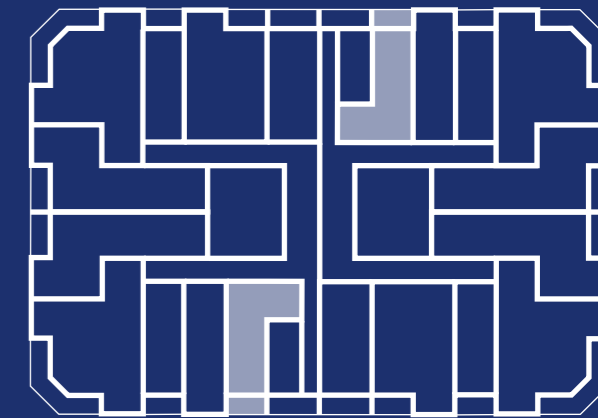
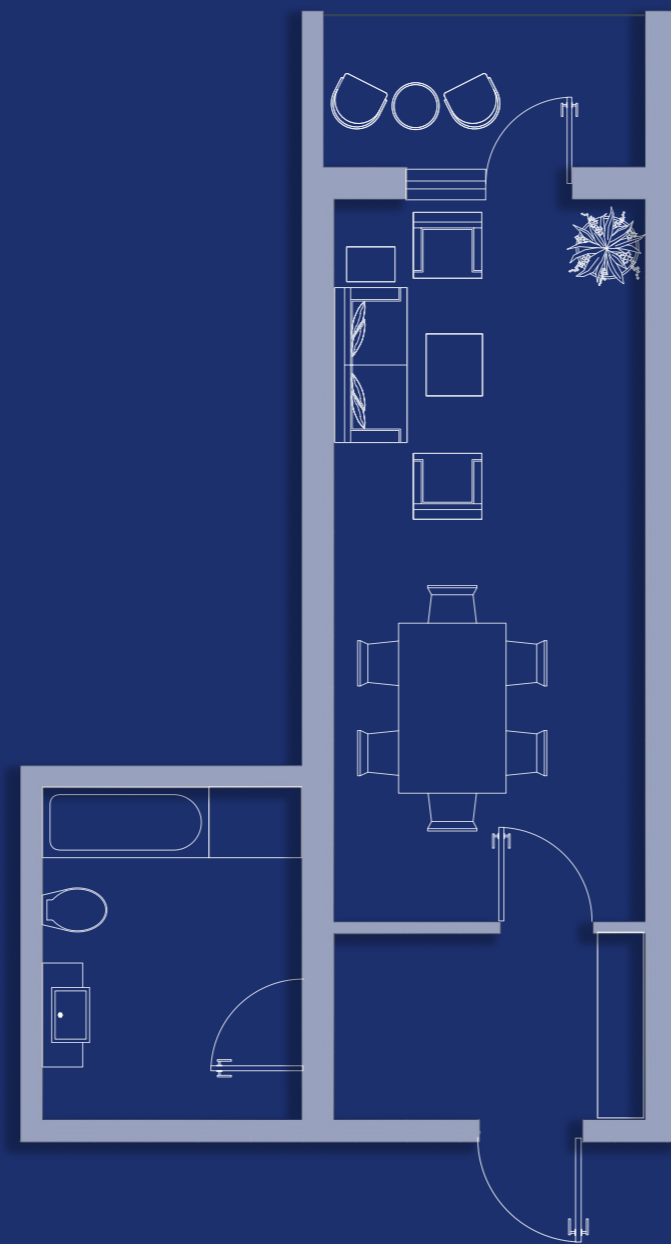
6-16 qavat

Dahliz - 5.7 m²

Sanuzel - 7.1 m²

Oshxona va mehmonxona - 22.5 m²

Balkon - 4.3 m²



40.1 M²

1 xonali

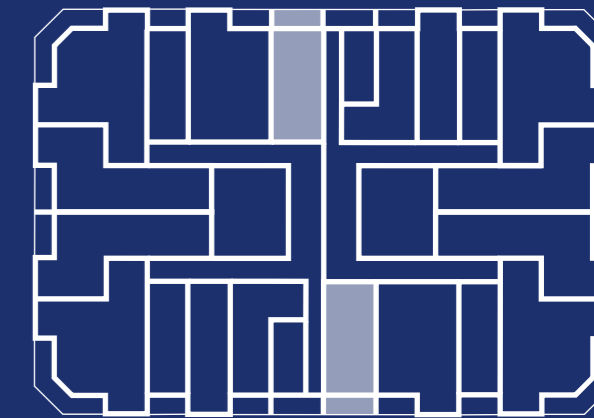
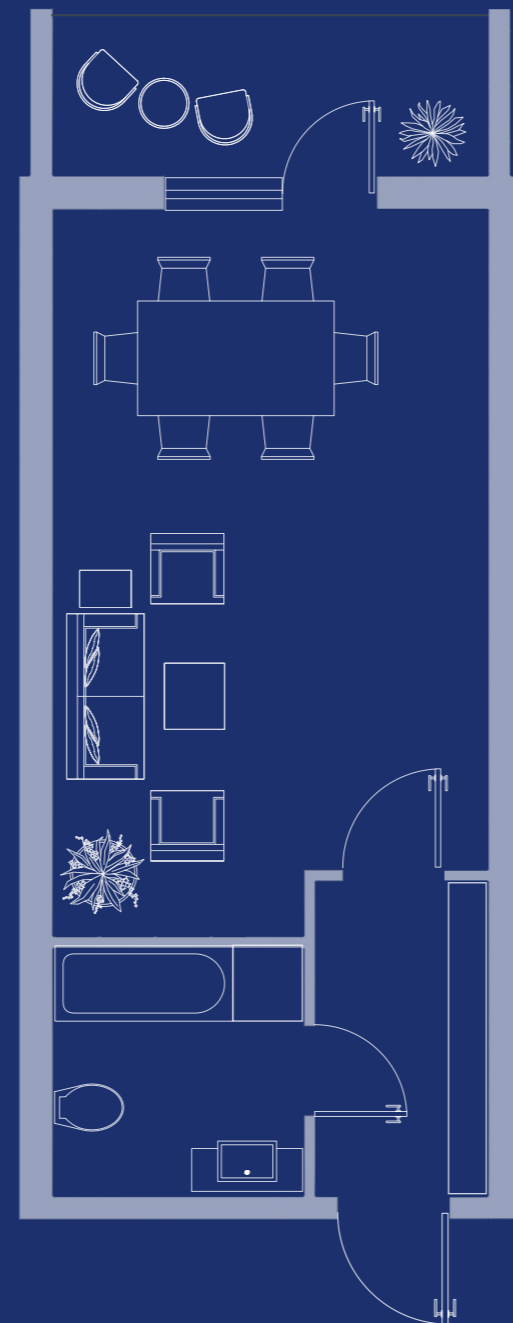
6-16 qavat

Dahliz - 4.5 M²

Sanuzel - 5 M²

Oshxona va mehmonxona - 25.1 M²

Balkon - 5.5 M²



63.3 M²

2 xonali

6-16 qavat

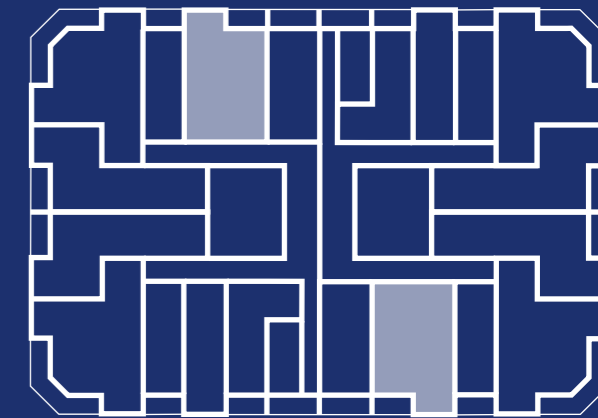
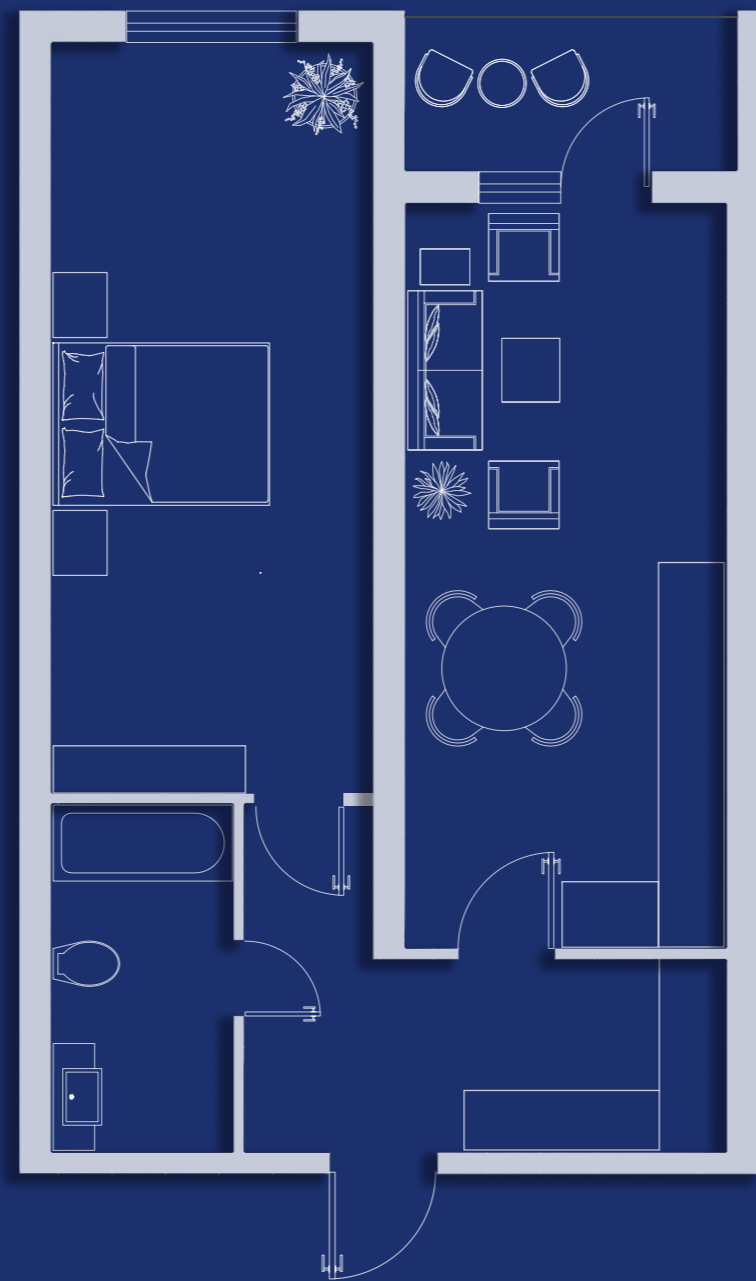
Dahliz - 10 M²

Sanuzel - 5.5 M²

Oshxona va mehmonxona - 22.5 M²

Yotoqxonalar - 21 M²

Balkon - 4.3 M²



63.6 M²

2 xonali

6-16 qavat

Dahliz - 3.9 M²

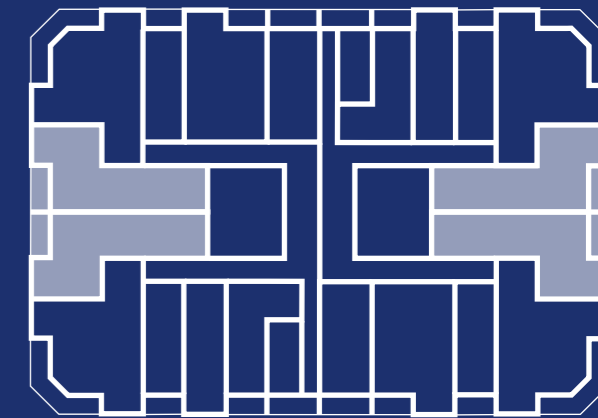
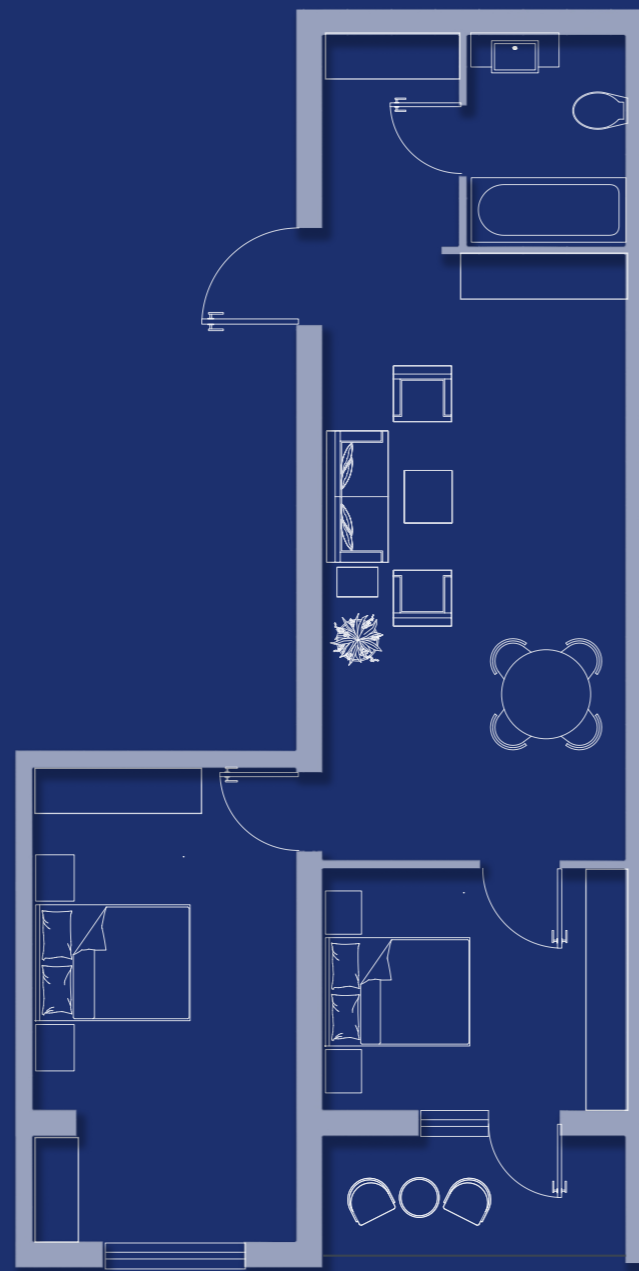
Yotoqxona - 16.1 M²

Yotoqxona - 10.1 M²

Sanuzel - 4.3 M²

Oshxona va mehmonxona - 24.4 M²

Balkon - 4.8 M²



30.4 M²

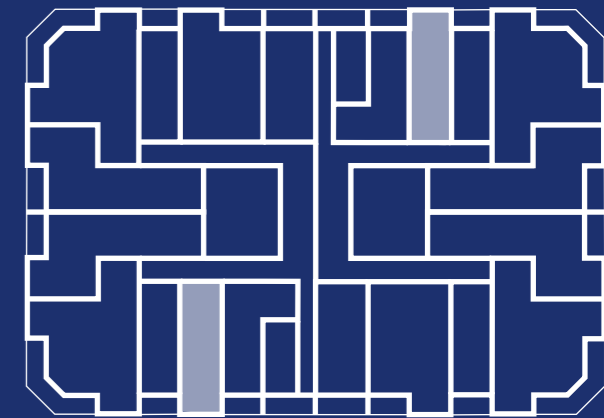
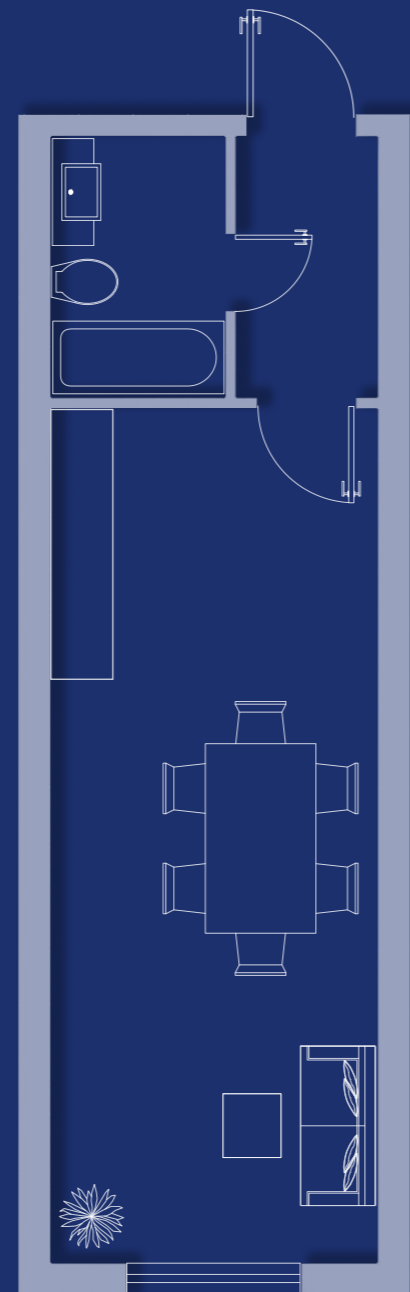
1 xonali

6-16 qavat

Dahliz - 3.1 M²

Sanuzel - 3.8 M²

Oshxona va mehmonxona - 23.5 M²



Qurilish materiallarining afzalliklari

Materiallarning sifati:

Zamonaviy, ekologik toza va sifatli bo'lgan quyma monolit va gazoblok materiallardan foydalanilgan.

Energotejamkorlik:

Energiya sarfini kamaytiradigan texnologiyalardan foydalangan holda ichki devorlarini avtoklav bo'lgan gazoblok maxsulotlari ishlatilgan va bu xonadonning, issiqlik va ovoz izolatsiyasini yaxshilangan. Bu kommunalxizmatlar uchun tulovlarini tejash uchun xizmat qiladi.

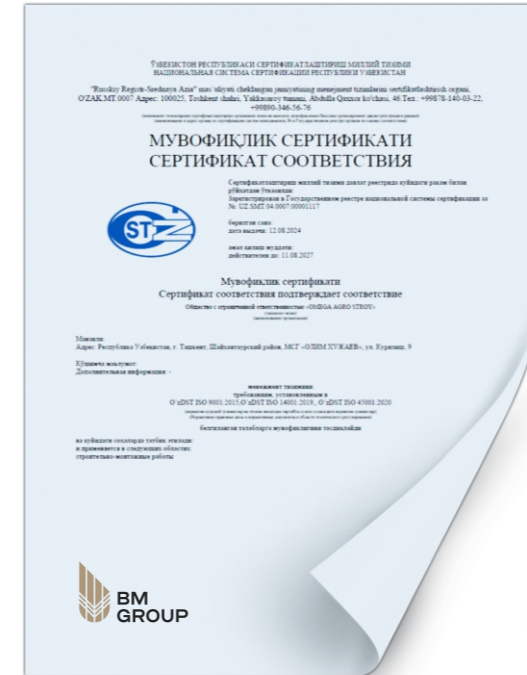
Seysmobardloshlik:

Zilzilalar paytida xavfsizlikni ta'minlaydigan konstruktiv yechimlardan foydalanilgan va zilzilaga bardoshlikni oshirilgan.



BM Group qurilish kompaniyasi

Bizning BM Group kompaniyasi tarkibiga kiruvchi "OMEGA AGRO STROY" MJSH qurilish firmasi 2013 yil tashkil topgan. Korxonamiz o'zining 11 yillik faoliyati davomida 20ga yaqin davlat tashkilotlari va 4 ta turar joy majmuasida jami 2500 ga yaqin xonadonlarni o'z egalariga topshirilgan. Korxonamiz Qurilish Vazirligi tomonidan ro'yxatga olingan shaffof qurilish reestrtdagi reytingi B bahosi bilan belgilangan. Xalqaro ISO sertifikatlariga ega.



ISO 45001:2018 /
O'z DST ISO 45001:2020

ISO 14001:2015 /
O'z DST ISO 14001:2019

ISO 14001:2015 /
O'z DST ISO 14001:2019

ISO 9001:2015 /
O'z DST ISO 9001:2015

ISO 45001:2018 /
O'z DST ISO 45001:2020

ISO 9001:2015 /
O'z DST ISO 9001:2015

Tashkil etilgan yili:

2013

Qurilish sohasida tajriba:

11 yil

Davlat tashkilotlari bilan hamkorlik soni:

20 ta

Qurib bitqazilgan turar-joy majmuasi:

4 ta

shaffof qurilish reestrtda:

B toifa

O'z egalariga topshirilgan xonadonlar soni:

2500 ta

To'lovdagi afzalliklar

Moslashuvchan to'lov tizimi:

Xaridlarni yanada qulayroq qilish imkoniyatlari. Muddatli to'lov imkoniyati, xaridorlarning ayrim toifalari uchun maxsus shartlar.

Chegirmalar va aksiyalar:

Davriy takliflar, savdo boshlanishida qulay sotib olish shartlari. Aksiyalar va maxsus takliflar mavjudligi.

Narx va sifat muvofiqligi:

Qulay narxlar uchun yuqori sifatli uy-joy.





**BM
GROUP**

Sotuv ofisi

Samarqand Darvoza ko'chasi, 27-uy

785-550-077

www.bm-group.uz